

# *City of Goldsboro*



## *SANITATION SERVICES*

The time has come for us to confront the problems of solid waste and the environment, and through recycling, you can be a part of the solution.

To participate in the recycling program, all you do is place aluminum beverage cans, glass, plastic and paper in your recycling container and roll it to the curb once every two weeks. Your regular garbage will go in a separate container to be rolled to the curb on a weekly basis. It's that easy! Both rollout containers will be provided at no cost to you. Your recyclables will be picked up at your home and you will have the satisfaction of knowing you are doing your part to make Goldsboro and the environment cleaner for all of us.

## ABOUT THE PROGRAM

### Who is Participating?

It is mandatory that all City residents participate. This includes approximately 13,000 homes. (See enclosed map).

### What Can I Recycle? (see diagram on recyclable materials, pg. 10-11)

**Aluminum Beverage Cans** - The aluminum that makes up beverage cans can be recycled to make new ones. Please place only beverage cans in one of the compartments of the recycling container. **STEEL FOOD CANS ARE NOT ACCEPTABLE.** If you have a large amount of cans in a two-week period, it may be necessary to crush the cans first.

**Glass** - Glass is another recyclable item that is melted down for re-use. Please rinse food waste, if any, and **remove all metal or plastic lids and caps from jars and bottles.** Labels do not have to be removed. Place brown, clear and green glass in separate compartments in the recycling container. Recycle only glass bottles and jars. No plate glass, light bulbs, ceramics or other glassware will be accepted.

**Paper** - All types of paper products can be recycled into roofing felt and asphalt shingles. This includes magazines, phone books, catalogues and flattened cardboard. You may want to remove one of the top trays from your recycling container to bring inside your home for storage of paper to be recycled. **Wax paper, aluminum foil, soap boxes, pizza boxes, tissue or paper that has been laminated in plastic cannot be recycled.** Also, paper which is contaminated with food or other waste will not be accepted.

**Plastic** - Two types of plastic bottles can be recycled. The first type, PET plastic, is the type found in clear and green plastic drink bottles. PET plastic is identified by the symbol . The other type, HDPE plastic, is the colored or opaque plastic found in many household containers, such as detergent bottles, milk jugs, and bleach containers. HDPE plastic is identified by the symbol . Styrofoam, motor oil bottles, and plastic grocery bags are not acceptable. **Please rinse out any contaminants, remove all lids, and place the two different types of plastic in separate bins in your recycling container.** Please flatten the plastic containers if more space is needed.

### For More Information Contact:

**General Services Department.....734-8674**  
**Sanitation Division.....739-7414**

### Interesting Recycling Facts

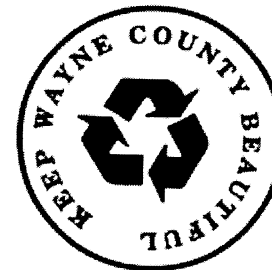
Every Sunday, the United States wastes nearly 90% of recyclable newspapers. This waste amounts to about 500,000 trees.

14 million pounds of paper are used to produce the New York Times and the New York Daily News on an average Sunday. Recycling the Sunday edition of the New York Times alone would save 75,000 trees weekly.

The energy saved from recycling 1 glass bottle can run a 100 watt light bulb for 4 hours.

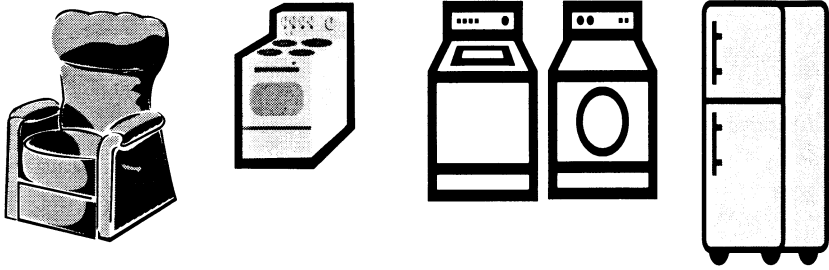
119,482 aluminum cans are recycled every minute in the United States.

It takes 2 plastic bottles to make enough polyester fiber for a baseball cap.



Printed on Recycled Paper

# WHITE GOODS AND BULKY ITEMS



- Call 739-7414 before placing at the curb for next day pick up
- Improperly discarded items may result in a fine

**NO - Building materials or other prohibited items!**

**Please note:** The recycling container has seven compartments for recyclables. You may use any compartment for each recyclable product as long as like items are placed in the same compartment. In fact, if you should have more of one recycled item that will fit in a single compartment and no items of another particular item, you may use two compartments for the more abundant recyclables. Just Remember -Keep like items in the same compartment.

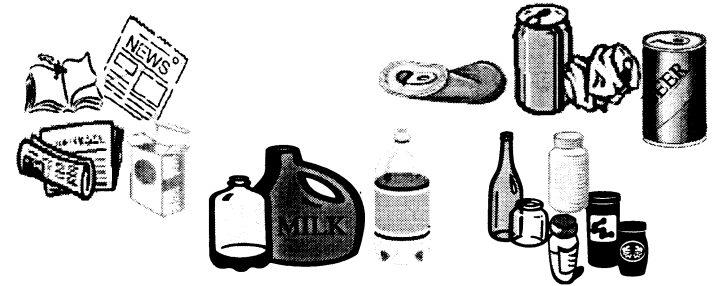
The refuse container should contain all other garbage and non-recyclable items.

### When Will My Garbage And My Recyclables Be Collected?

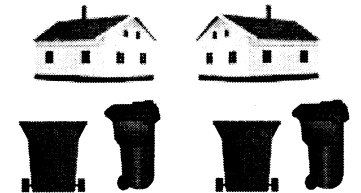
Your scheduled collection day will occur once per week for garbage and once every other week for recyclables. **You should roll the respective container to the edge of the curb in front of your house on the scheduled collection day.**

Collection begins at 6:00 a.m. during daylight savings time and at 7:00 a.m. during eastern standard time. **Please note these times so that your appropriate container is at the curb at the start of the collection day.**

Please refer to your collection schedule and local news media for holiday collection times.



## Questions and Answers



### Do I Have to Participate?

Yes. City crews will maintain records as to participation. If your recycling container is not at the curb once per month, you will be assessed a \$25.00 fine on your utility bill. The City pays approximately \$300,000 per year in landfill fees and fines for having recyclable items in our landfill loads. Please help, recycle - it is a much cheaper alternative to the landfill! Help Keep City Taxes low!

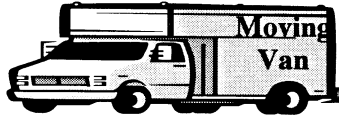
## Who Owns The Containers?



The City of Goldsboro owns both the refuse and recycling containers and they will be provided at no cost to you. The serial number from each container is assigned to your address so that you can keep up with your containers. The City maintains a list of container assignments and will be glad to assist with identifying your containers if needed. **If your containers are lost, damaged, or stolen, they will be replaced at your expense.** Please notify the General Services Department, Sanitation Division at 734-8674 if this occurs.

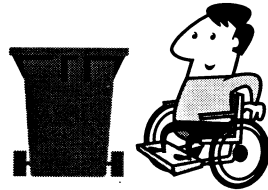
To minimize the possibility of theft or vandalism, roll out containers should be moved to the curb no earlier than 24 hours prior to your pick up date. Please pull your roll out containers back from the street within 24 hours after the contents are collected. Do not leave your roll out containers at the street or behind the curb on Saturday or Sunday unless, due to a holiday, Saturday is your collection day. Failure to remove your roll out containers from the street or curb after being serviced could result in a penalty being assessed to your water bill in the refuse column.

## What If I Move?



If you move, the refuse and recycling containers need to be assigned to a new resident. Please contact the General Services Department, Sanitation Division at 734-8674 prior to your move. The City will pick up containers upon the disconnection of your water service.

## What If I Am Physically Unable To Roll Either Container To The Curb?



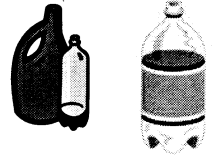
All persons living alone who can provide proof of physical handicap will not be required to roll either container to the curb. However, every one who is furnished containers will be required to separate recycled goods, regardless of age or handicap.

# RECYCLES

## Plastic



Clear or colored plastic beverage bottles (soft drink bottles, water bottles, etc.)



Milk, Bleach, Most Detergent and Soap Bottles

**NO** - Cooking oil bottles, motor oil jugs, plastic bags, anti-freeze jugs, plastic toys, styrofoam, and all other plastics.

**INSTRUCTIONS:** Empty and Crush—No Lids!  
Separate by



## Mixed Paper

Newspapers, Cardboard, Phone Books, Magazines, Dry Food Boxes, Cardboard Boxes



**NO** - Waxed Paper, Laminated Paper, Tissue Paper, Soap Boxes, Ice Cream Boxes, or Pizza Boxes

**INSTRUCTIONS:** Flatten All Boxes

# GOLDSBORO

*Here's What You Can Recycle At Home*

## Aluminum Cans Only!!



**NO** - Steel Food Cans or Other Metal Cans.

INSTRUCTIONS: Empty can; crush if more space is needed!

---

## Glass

Clear, Brown, and Green Glass Jars, Bottles, and Containers are acceptable recyclable glasses.



**NO** - Light bulbs, Plate Glass, Ceramics, or any Glass that is Not a Container - **NO Blue Glass!**

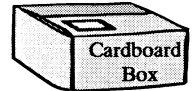
INSTRUCTIONS: Rinse out - No lids!  
Do Not Break!  
Please Separate By Color!  
(Clear, Brown, and Green)

## Who Gets The Money From The Sale of The Recyclables?



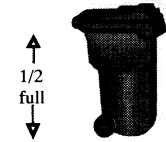
The implementation of this solid waste program has cost the City approximately \$1.5 million dollars. Revenues from recycled materials will be used to offset the initial cost of the program. Revenues will also be used to keep down the cost of all City solid waste services.

## What If I Have More Recyclable Goods Than Will Fit In The Container?



Place overflow items in a cardboard box beside or on top of the recycling container at the curb. That way, the overflow items and the box will be recycled.

## What If My Recycling Container Is Less Than 1/2 Full At The Time Of Collection?



You will not be required to roll your recycling container to the curb if it is less than 1/2 full at the time of collection; however, you will be required to roll your recycling container to the curb at least once per month. Failure to comply will result in a citation and a fine.

## What About Yard Waste, White Goods, and Household Rubbish Collection?

The following regulations still apply as set out in the Goldsboro Code of Ordinances.

### Yard Waste

General yard waste such as grass clippings, vines, garden and hedge trimmings, straw, and other such debris is to be placed behind the curb for pick up and should not be containerized in a bag.

Yard waste should be placed loose behind the curb; leaves should be piled separate from other yard waste.

The amount of yard waste collected from an individual residence is limited to no more than 1/4 truck load per collection. Collection of yard waste will be made on the same schedule as recyclable materials.

### Tree Limbs and Shrubbery Trimmings

Tree limbs and shrub trimmings should be placed in a pile separate from leaves. Limbs shall be a maximum of 4 feet in length. The amount of limbs collected from an individual residence is limited to no more than 1/4 truckload per residence per collection. **Cut trees and stumps are not collectable by the City and must be disposed of by private means.**

### Leaf Collection

During leaf falling season (October-February), leaves should be raked to a point behind the curb. During this season, wire cages may be used to help prevent blowing and scattering of leaves. Do not put leaves in the street, drainage ditches, or over water meters and avoid mixing leaves with limbs....these will damage the City's collection equipment.

The City will attempt to collect leaves on the same day as recyclable materials; however, there may be a one or two-day delay depending on the volume of leaves being collected in your area.

### Discarded Furniture, Appliances, Etc.

Items such as worn out furniture, refrigerators, mattresses, box springs, stoves, water heaters, etc. will be picked up by the City year round for a small fee; however, during a specified period each year, these items will be picked up by the City at no cost. Free pick up weeks will be in the spring of each year with notice being given to the public prior to the scheduled time.

Throughout the rest of the year, these items will be collected on a call in basis. Residents may schedule pick up by calling the General Services Department at 739-7414.

When collecting discarded furniture, appliances, mattresses, etc., at the curb, a fee of \$5.00 will be charged for collecting up to 3 items and \$10.00 for collecting up to 6 items. No more than 6 items will be picked up at the same address during a one-week period. **This fee does not apply during the annual spring and fall clean up campaign.** Items are to be placed in an area behind the curb no earlier than 24 hours prior to the date designated by the General Services Department for pick up.

Landowners are responsible for the general appearance of their property.

### Limitation on Collections

The City of Goldsboro will not be responsible for the collection of any of the following:

*Dirt, turf, rock, building materials, trade waste, carpeting, wallpaper, wet paint, metal posts, swing sets, plastic swimming pools, gasoline/kerosene cans, lumber shavings, brick, concrete, metal, shingles, fencing material, logs, tree stumps, automobile parts, animal waste, hazardous materials, or like materials or by products. None of these materials are to be placed at the curb for collection by the City of Goldsboro.*

Yard waste generated by landscaping, tree or yard maintenance contractors or other agents hired to do work at a residence or business will not be collected by the City of Goldsboro.

### Exceptions To Roll-Out Pick Up

Residents who live alone and can provide physician certification of physical handicap will not be required to place roll out containers at the curbside for collection. Such proof of handicap shall be submitted to the General Services Department. A representative of the General Services Department will meet with the applicant to verify the applications and discuss the service prior to final approval.

### Fines

1. A fine of \$25.00 will be assessed for placing general yard waste, limbs, leaves, furniture, appliance, etc. in the street. This fine will increase to \$50.00 for the fourth violation and each violation thereafter.
2. When discarded furniture, appliances, mattresses and other bulky items are placed at the curb, either without making arrangements for their collection or prior to 24 hours of their collection day, a \$25.00 fee will be assessed for the first three violations and a \$50.00 fine for the fourth violation and each violation thereafter.
3. Residents not recycling, as evidenced by their failure to place their recycling container at the curb at least once a month, will be fined \$25.00, which will appear in the refuse column of your utility bill.
4. When roll-out recycling and garbage containers are placed at the curb prior to 24 hours of their collection date or when they are not removed from the right-of-way within 24 hours after their collection, a penalty of \$25.00 will be assessed. This fine will increase to \$50.00 for the fourth violation and each violation thereafter. This fine will appear on your utility bill.

\*\*\* Failure to make payment of the fine within 20 days after the postmarked date of the bill may result in interruption of utility service provided by the City including water, sanitary sewer and shall be subject to all reinstatement charges.